

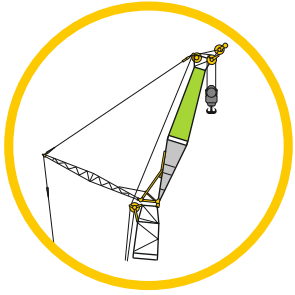
US-Wind-Kit
LR 1800-1.0



LIEBHERR

LR 1800-1.0 ready for 100 m / 105 m turbines

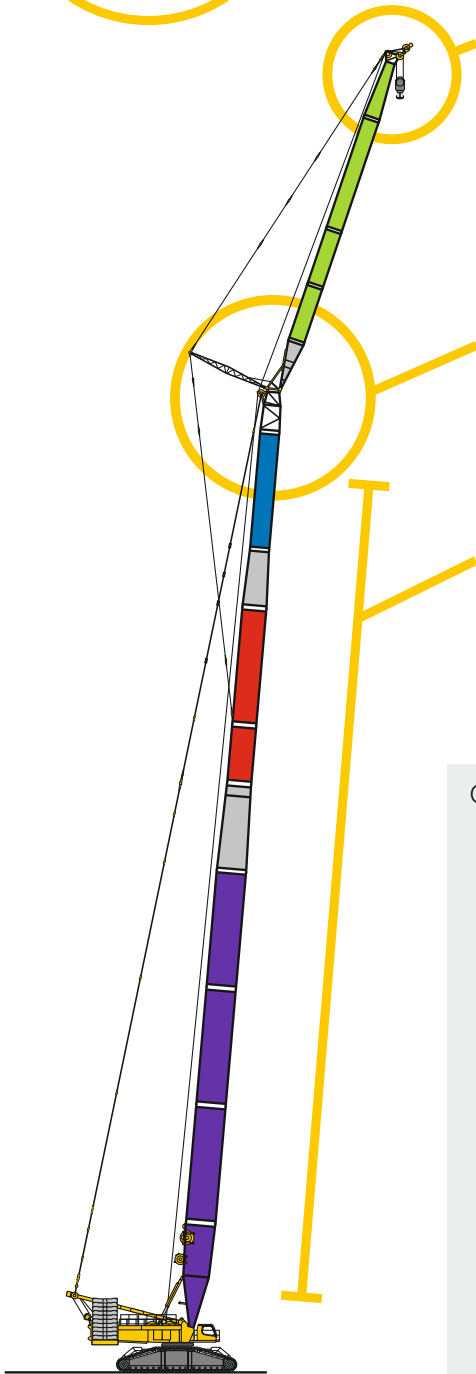
Wind-Kit



F – fixed jib with integrated runner

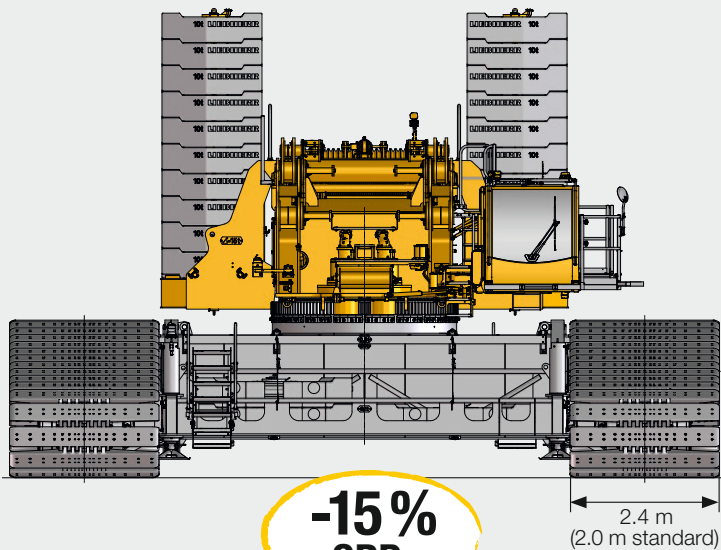
A – adapter without sheaves

HSL3 – main boom H – S – L version 3



HSL3AF

Option: 2.4 m track pads for minimum ground bearing pressure



**-15%
GBP**

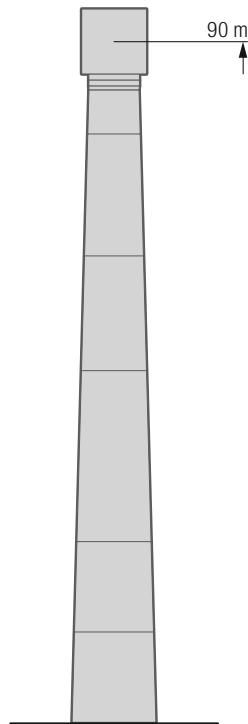
2.4 m
(2.0 m standard)

For every turbine the right capacity

90 m turbine



m	HSL3 90			HSL3 96		
	F 12	F 15	F 18	F 12	F 15	F 18
	12°	12°	12°	12°	12°	12°
16	185			185		
17	185	170				
18	184	167	143	182	167	
19	178	164	140	173	163	
20	169	160	137	163	159	137
22	152	151	132	147	147	133
24	137	137	127	133	133	128
26	125	125	122	120	121	122
28	114	114	115	110	110	112
30	104	105	106	101	101	102
32	96.1	96.4	97.8	92.4	92.8	94.3
34	88.5	88.9	90.4	85.1	85.5	87
36	80.8	81.9	83.5	78.5	78.9	80.4
38	73.7	74.8	76.9	71.9	73	74.5
40	67.7	68.5	70.3	65.6	66.8	68.8
44	57.1	58.1	59.8	55.3	56.3	57.9
48	48.5	49.2	50.9	46.5	47.5	49.3
52	41.4	42	43.6	39.3	40.1	41.9
56	35.1	35.8	37.4	33.2	34.2	35.7
60	30.1	30.7	32.1	28.1	28.8	30.2
64	25.7	26.2	27.6	23.6	24.2	25.7
68	21.7	22.3	23.7	19.8	20.3	21.7
72	18.3	18.8	20.1	16.3	16.9	18.3
76	15.2	15.8	17	13.3	13.7	15
80	12.6	13	14.2	10.5	10.9	12.2
84	10.2	10.6	11.7	8.1	8.5	9.7
88	8	8.4	9.3	5.9	6.3	7.5
92		6.4	7.3			5.4
96			5.5			



S3374

ft	HSL3 295			HSL3 315		
	F 39	F 49	F 59	F 39	F 49	F 59
	12°	12°	12°	12°	12°	12°
55	408			408		
60	404	366	313	395	366	
65	376	355	304	364	353	304
70	346	342	295	335	335	296
75	320	320	286	310	310	288
80	297	297	278	287	287	280
85	276	277	269	267	267	270
90	258	258	258	249	249	252
95	241	242	244	232	233	236
100	226	226	229	217	218	221
105	212	212	216	204	205	208
110	199	200	203	191	192	195
115	186	188	191	180	180	184
120	173	176	180	169	170	173
125	162	164	169	158	160	164
130	152	153	158	147	150	154
135	142	144	148	138	140	144
140	133	135	139	129	131	135
145	125	127	131	121	123	127
150	117	119	123	113	116	119
155	110	112	115	106	108	112
160	104	105	109	99.1	101	105
165	97.6	99.1	102	93.1	95	98.9
170	91.9	93.2	96.8	87.4	89.1	93.1
175	86.3	87.9	91.3	82	83.9	87.4
180	81.2	82.6	86.2	76.9	78.8	82.4
185	76.3	77.8	81.3	72	74.1	77.4
190	72	73.2	76.6	67.6	69.3	72.9
195	67.8	69.1	72.3	63.3	65	68.3
200	63.9	65	68.1	59.4	60.7	64.2
205	60.1	61.3	64.4	55.5	57	60.3
210	56.7	57.7	60.8	51.9	53.3	56.6
215	53.3	54.4	57.3	48.4	49.9	53.2
220	49.9	51.2	54	45.5	46.6	49.8
225	46.8	48	51	42.5	43.6	46.7
230	43.7	44.8	48	39.5	40.7	43.6
235	41.1	42	45	36.6	37.8	40.9
240	38.4	39.3	42.2	33.9	35	38.2
245	35.7	36.9	39.5	31.4	32.3	35.5
250	33.3	34.5	37.1	29	29.8	32.8
255	31	32	34.8	26.6	27.4	30.4
260	28.8	29.8	32.5	24.3	25.2	27.9
265	26.7	27.6	30.2	22.2	23	25.8
270	24.5	25.6	28.1	20.1	20.8	23.7
275	22.6	23.5	26	18.1	18.9	21.6
280	20.8	21.5	24	16.2	17	19.6
285	18.9	19.7	21.9	14.2	15.3	17.7
290	17.1	18	20	12.6	13.5	16
295	15.5	16.3	18.4		11.8	14.3
300		14.6	16.8			12.6
305		13.1	15.2			
310			13.6			
315			12.2			

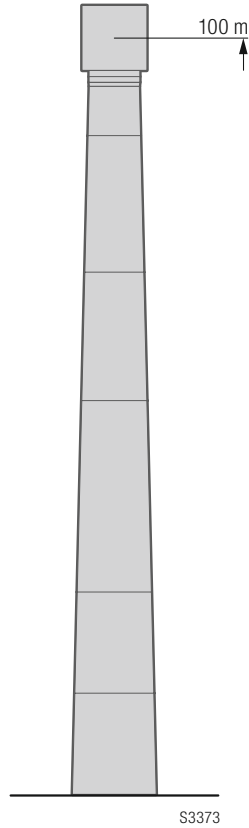
For every turbine the right capacity

100 m turbine



330,700 lb-
507,000 lb

m	HSL3 102	
	F 12	F 15
	12°	12°
18	172	
19	165	
20	157	153
22	141	143
24	127	129
26	116	117
28	105	107
30	96.3	97.9
32	88.2	89.9
34	81	82.7
36	74.6	76.2
38	68.7	70.4
40	63.4	65.1
44	53.3	55.1
48	44.5	46.4
52	37.2	38.9
56	31.2	32.8
60	25.9	27.5
64	21.4	22.8
68	17.4	18.8
72	14	15.3
76	10.9	12.2
80	8.2	9.3
84	5.7	6.9
88		



ft	HSL3 335	
	F 39	F 49
	12°	12°
60	374	
65	350	338
70	322	323
75	297	301
80	276	279
85	256	260
90	238	242
95	222	226
100	208	211
105	194	198
110	182	186
115	171	175
120	160	164
125	151	154
130	142	146
135	133	137
140	125	129
145	117	120
150	109	113
155	102	106
160	94.9	98.9
165	88.6	92.3
170	82.5	86.5
175	77.4	80.8
180	72.3	75.9
185	67.6	71.1
190	62.9	66.5
195	58.6	62.2
200	54.6	57.9
205	50.7	54.1
210	47.1	50.3
215	43.5	46.9
220	40.3	43.5
225	37	40.3
230	34.3	37.2
235	31.6	34.3
240	28.9	31.7
245	26.1	29.1
250	23.7	26.6
255	21.2	24
260	19.1	21.7
265	17	19.5
270	15	17.5
275	12.9	15.5
280	11	13.5
285		11.6
290		

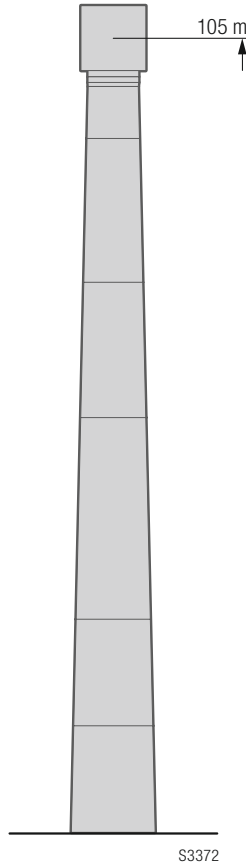
For every turbine the right capacity

105 m turbine

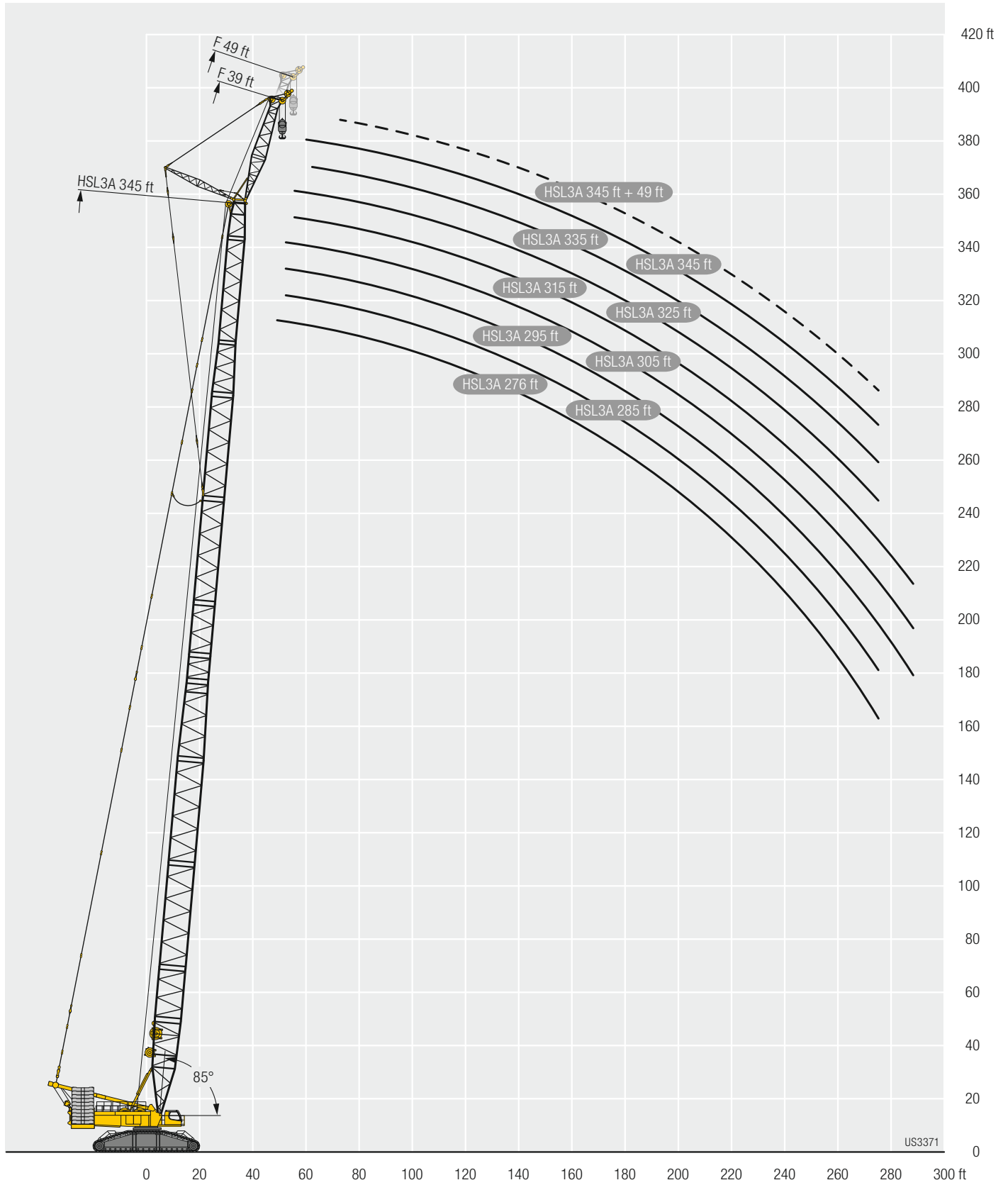


330,700 lb -
507,000 lb

m	HSL3 105	
	F 12	F 15
	12°	12°
18	164	
19	160	151
20	155	150
22	140	141
24	126	128
26	115	116
28	104	106
30	95.4	97.1
32	87.5	89.2
34	80.4	82.1
36	74	75.7
38	68.2	69.9
40	62.8	64.6
44	52.8	54.5
48	44.2	46.1
52	36.9	38.7
56	30.8	32.5
60	25.5	27.2
64	21	22.6
68	17.2	18.6
72	13.8	15
76	10.7	12
80	7.9	9.2
84	5.6	6.7



ft	HSL3 345	
	F 39	F 49
	12°	12°
60	359	
65	344	332
70	319	321
75	295	298
80	273	277
85	254	257
90	236	240
95	221	224
100	206	210
105	193	197
110	181	184
115	170	173
120	159	163
125	150	153
130	141	144
135	132	136
140	123	127
145	115	119
150	108	112
155	101	105
160	93.9	98.4
165	87.9	91.9
170	82.1	86
175	76.6	80.6
180	71.7	75.2
185	66.7	70.5
190	62.3	65.9
195	57.8	61.5
200	53.8	57.4
205	50	53.3
210	46.3	49.7
215	43	46.1
220	39.7	42.9
225	36.6	39.8
230	33.6	36.8
235	31	33.9
240	28.4	31.1
245	25.9	28.7
250	23.3	26.2
255	20.9	23.8
260	18.6	21.4
265	16.5	19.2
270	14.5	16.9
275	12.5	15
280		13.1



Subject to modification

Liebherr-Werk Ehingen GmbH

Postfach 1361, 89582 Ehingen, Germany

☎ +49 73 91 5 02-0, Fax +49 73 91 5 02-33 99

www.liebherr.com, E-mail: info.lwe@liebherr.com

www.facebook.com/LiebherrConstruction